

Overview

This document describes how to load the certificate(s) for both the WLAN Extensible Authentication Protocol (EAP), SOTI Connect <https://www.soti.net/products/soti-connect/>, and 802.1x using the **PSA File Utility**. The **PSA File Utility** will take certificate files and combine them with the PTX-SETUP commands such that a single output file can be sent to the printer and effectively load the certificates.

WiFi Certificates

There are two options that can be selected for EAP mode that determines whether one or three files is needed. For EAP-TLS, the printer requires three files:

- Certificate Authority (CA) File
- Privacy Enhanced Mail (PEM) Certificate File
- Key File

For EAP-PEAP, only the Certificate Authority File is required. These files should originate from your System Administrator.

SOTI Certificates

There are 4 different certificate files that can be downloaded to the printer to support SOTI connection:

- MQTT Certification File
- Printer Certification File
- Private Key File
- File Store File

One or more of these files can be provided to create a single file that loads them into the printer.

802.1x Certificates

There are 3 different certificate files that can be downloaded to the printer to support the 802.1x connection:

- Certificate Authority (CA) File
- Printer Certification File
- Private Key File

One or more of these files can be provided to create a single file that loads them into the printer.

Downloading the Certificates

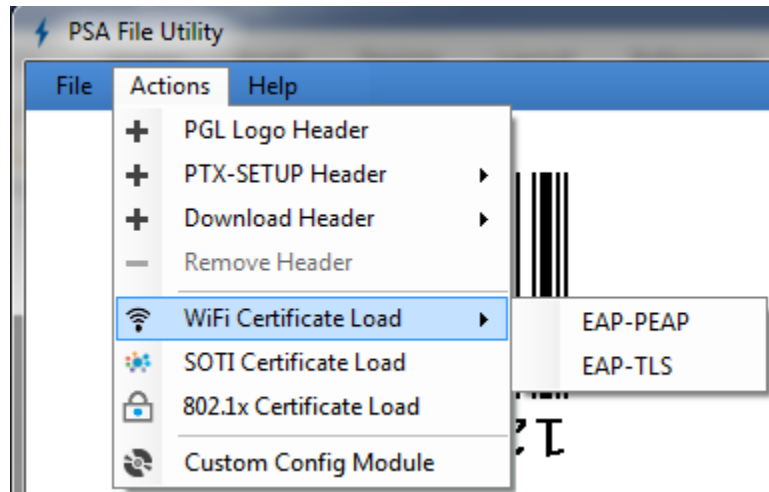
PTX-SETUP commands will be used with the Certificate files to generate an output file. Once generated, it can be sent to the printer as any other application or host job while the printer is online.

Important Notes

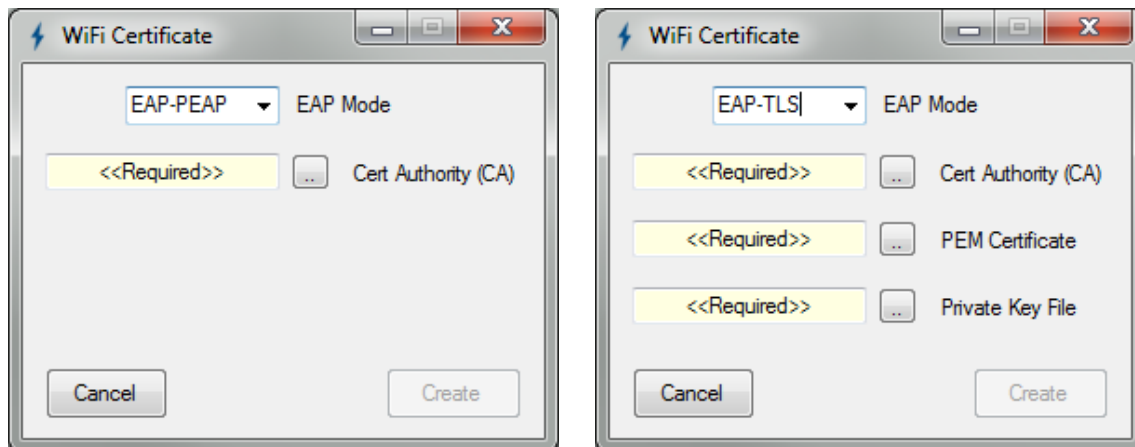
1. WLAN Certificates can only be loaded if the WLAN Option is installed.
2. For the certificates to work correctly, the Real Time Clock (RTC) must be set. This can be done by setting the menus in section **Network > Date**.


WiFi Certificates: Create the Download File

Run the **PSA File Utility** and then execute the **WiFi Certificate Load** section as follows, choosing either EAP-PEAP or EAP-TLS.



This will bring up a Dialog with either one or three files needed as input:

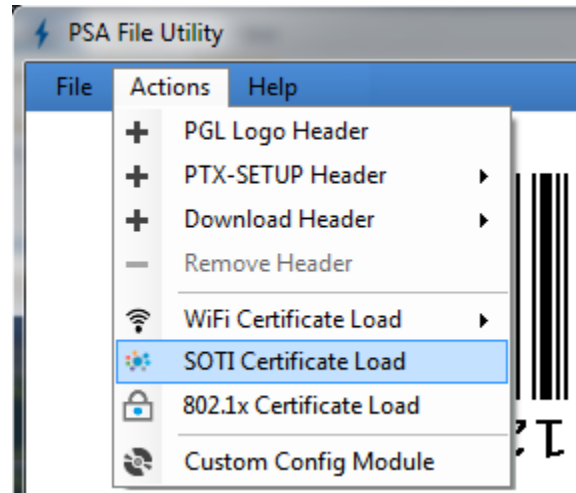


You can either double-click in the file boxes <<Required>> or click on the  button to enter the file names for each type of security file.

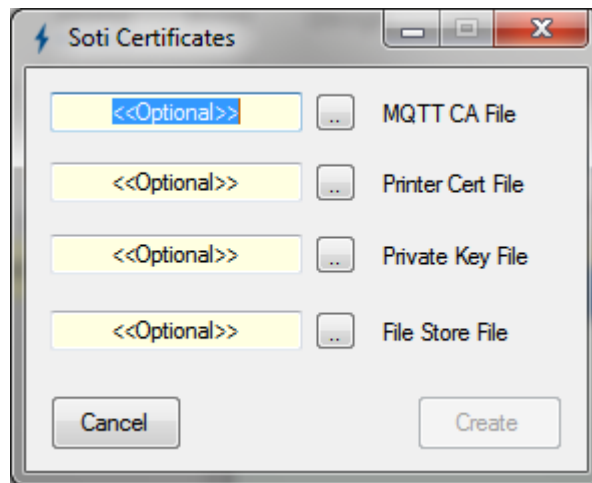
Once every required file has been entered, the **Create** button can be pushed and the user will be prompted to choose an output file.

SOTI Certificates: Create the Download File

Run the **PSA File Utility** and then execute the **SOTI Certificate Load** section as follows.



This will bring up a Dialog with four optional files that can be chosen as input:

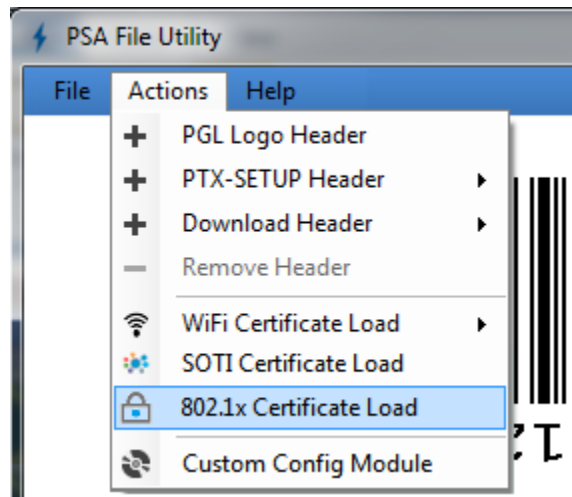


You can either double-click in the file boxes or click on the button to enter the file names for each type of security file.

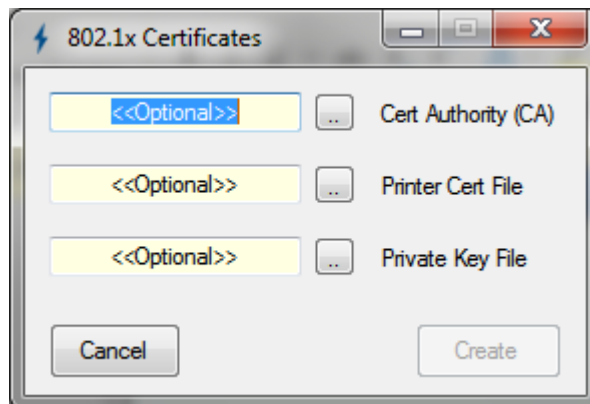
Once at least one file has been entered, the **Create** button can be pushed and the user will be prompted to choose an output file. Ideally, all four files would be entered before doing the **Create** action.

802.1x Certificates: Create the Download File

Run the **PSA File Utility** and then execute the **802.1x Certificate Load** section as follows.



This will bring up a Dialog with three optional files that can be chosen as input:



You can either double-click in the file boxes or click on the button to enter the file names for each type of security file.

Once at least one file has been entered, the **Create** button can be pushed and the user will be prompted to choose an output file. Ideally, all four files would be entered before doing the **Create** action.