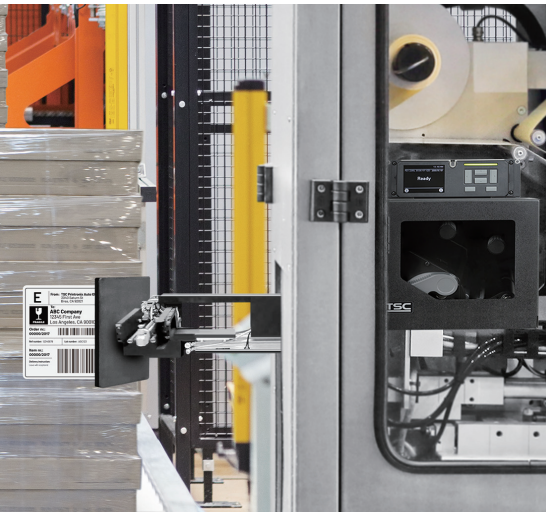




**TSC**



# 2025 PRODUCT GUIDE



AMERICAS VERSION



# Contents

<b>Who We Are</b> .....	<b>3</b>
<b>Leading AIDC Solutions</b> .....	<b>4</b>
<b>Core Verticals</b> .....	<b>5</b>
<b>Key Values</b> .....	<b>6</b>
Desktop Printers .....	8
Industrial Printers .....	13
Mobile Printers .....	17
Print Engines.....	20
Barcode Inspection Printers.....	22
Healthcare .....	24
Linerless .....	26
RFID Printers.....	29
<b>Genuine Supplies</b> .....	<b>32</b>
<b>Integrated Print Solutions</b> .....	<b>33</b>
<b>Global Service Program</b> .....	<b>34</b>





# Who We Are

Founded in 1991 and listed on the Taipei Stock Exchange, TSC Auto ID brings 34 years of expertise to the AIDC industry. With a strong management team and extensive global sales and technical support, we specialize in thermal printers, label solutions, and Enterprise Mobile Computer (EMC) technology for clients ranging from small businesses to large enterprises.

Our growth strategy includes strategic acquisitions, such as PRINTRONIX's thermal printer business in 2016, label manufacturers DLS(U.S.) in 2019 and MGN (Poland) in 2023, and handheld manufacturer Bluebird Inc. in 2024. Our goal is to become a leading brand in the AIDC market.



# Leading AIDC Solutions

At TSC Auto ID, we are dedicated to being a premier solutions provider and thought leader in the Auto ID industry.

We build strategic partnerships and adaptive solutions to drive innovation through automatic data identification, leveraging advanced methods, technologies, and devices—delivering more than expected.

The background features a dark blue gradient with various AIDC (Automatic Identification and Data Capture) symbols including QR codes, 1D barcodes, and 2D Data Matrix codes. A prominent 3D-style TSC logo is centered in the lower half, rendered in a light blue color. A red laser-like beam of light cuts across the bottom right corner of the image.

TSC



# Core Verticals

Worldwide, major companies rely on TSC Auto ID to provide asset tracking and identification solutions. We have a proven track record in providing solutions to key industries and specialize in adapting solutions to meet diverse business needs.



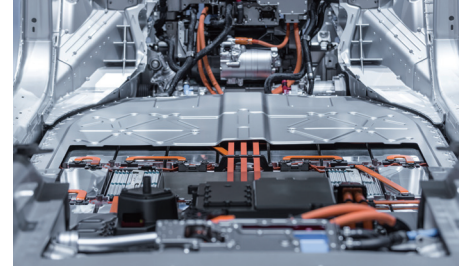
## Transportation & Logistics

- Compliance labeling
- ROI of readable barcodes
- RFID in the supply chain
- Boost efficiency with cross-docking



## Retail

- Defend against chargeback fees
- Track and trace with RFID
- Direct store delivery solutions
- Product tagging and price changes



## Manufacturing

- Meet compliance regulations and avoid chargeback fees for bad barcodes
- Better performing RFID printers
- High-value asset tracking with adaptive RFID tags



## Food & Beverage

- Product labeling with critical information
- Deliver directly to customers
- Barcode inspection technology
- Mobile inspection labels



## Healthcare

- Ensure the safety and security of patients with accurate identification
- Cerner certified and ready for patient admission



## Entertainment & Hospitality

- Event admission and security made easier than ever before
- Simple operation interface streamlines ticketing and order taking



## Automotive

- Track and trace
- Barcode inspection technology
- Mobile inspection labels
- Tire labeling



## Horticulture

- Print high-quality plant stakes
- Track seed production
- Capture every detail



# Key Values



## Comprehensive Product Portfolio

We offer a complete range of label printing solutions to meet diverse application needs. Our extensive product line includes mobile, desktop, industrial label printers, and print engines suitable for multiple industries. Our printers handle various media and excel in challenging applications.



## High Performance and Reliable

We provide reliable, high-quality label printing solutions. Designed for different applications, our printers feature either all-metal construction, specific testing for mobility, or tailored designs to ensure dependable performance in various environments.



## User-Centric and Innovative

We enhance user experience with intuitive designs, flexible customization, and future-upgradable printers. Our innovations include RFID encoding, automated barcode verification and validation, linerless printing, and ribbon saving, all aimed at optimizing ROI and offering flexibility.



## Integrated Print Solutions

Our software simplifies operations and boosts productivity with remote and centralized management through tools like TSC Console and PrintNet Enterprise. TSC Standalone Creator and TSCPRTGo streamline mobile printing, while emulation ensures seamless integration with various printer languages.



We offer modular upgrade kits—ODV-2D, linerless, and RFID—to meet evolving business needs, as well as, antimicrobial and easy-to-disinfect healthcare printers.



### Barcode Inspection

The optional ODV-2D real-time barcode verifier and validator scans every barcode on every label as it is printed, ensuring compliance with ISO-based grade thresholds. Labels with bad barcodes can be automatically overstruck and reprinted, making it an excellent solution for compliance applications that demand high-quality barcodes.



### Healthcare

The hygienic design of our healthcare printers aims to provide long-lasting antimicrobial protection and easy disinfection, minimizing contamination risks. It adheres to the IEC 60601-1 Medical-Grade standard, ensuring a safe and reliable power supply in healthcare facilities.



### Linerless

Linerless labeling offers a sustainable alternative. Our anti-adhesive linerless printers ensure smooth operations, high print quality, easy maintenance, and broad compatibility with validated media. Depending on the region, we offer both printers and media to serve our customers.



### RFID

Our RFID printers support encoding on both standard RFID labels and on-metal tags and offer advanced RFID calibration features for easy setup. They enable quick switching between different label constructions. Any labels that do not encode properly are overstruck and reprinted to ensure that only functional RFID labels are used.



# Desktop Printers

We manufacture one of the largest selections of desktop printers on the market. Designed to the highest quality standards, our desktop printers are budget-friendly and customizable to adapt to a wide variety of industries and applications. Our desktop printers come standard with premium features like high-resolution, and remote printer management.







## DL Series

The DL Series 4-inch desktop barcode printers offer direct thermal printing and are optimized for easy media loading, making them ideal for daily print jobs. They feature auto-switching printer language emulation, a media window for monitoring media consumption, and real-time remote monitoring through TSC Console to simplify daily operations.

Model	Resolution	Max. Print Width	Max. Print Length	Max. Print Speed	Dimensions (W x H x D)	Weight	Tools	Key Features
DL240*	203 dpi	4.25"	1,000"	6 ips	181mm x 162mm x 223mm 7.13" x 6.38" x 8.78"	1.1kg	TSC Console	<ul style="list-style-type: none"> <li>Supports multiple media types, with a print width of up to 108mm and a length of up to 25,400mm.</li> <li>Tool-free TPH (thermal printhead) removal and replacement for easy maintenance</li> <li>Media window for quick supply level checks</li> </ul>
DL241*	203 dpi	4.25"	1,000"	6 ips				

\*Product availability varies among regions; please contact your local sales representative for more information.



## DA Series

The DA Series features a user-friendly design ideal for a wide variety of applications including product marking, point of sale, retail, small office, shipping labels, and many more at a very competitive price.

Model	Resolution	Max. Print Width	Max. Print Length	Max. Print Speed	Dimensions (W x H x D)	Weight	Tools	Key Features
DA210	203 dpi	4.25"	110"	6 ips	172mm x 165mm x 195mm 6.77" x 6.50" x 7.68"	1.5kg	TSC Console TSCPRTGo	<ul style="list-style-type: none"> <li>High quality double walled clamshell design</li> <li>Up to 152.4mm (6") per second print speed</li> <li>Spring loaded media holder</li> <li>5" OD media capacity</li> </ul>
DA310	300 dpi	4.16"	40"	4 ips				
DA220	203 dpi	4.25"	1,000"	6 ips				
DA320	300 dpi	4.16"	450"	4 ips				<ul style="list-style-type: none"> <li>Crisp white and bright full-color scheme</li> <li>Antimicrobial and disinfectant-ready casing</li> <li>IEC 60601-1 Medical-Grade standard power supply</li> </ul>
DA220HC*	203 dpi	4.25"	1,000"	6 ips				
DA320HC*	300 dpi	4.16"	450"	4 ips				

\*Not currently available in the US, Canada and Latin America.



## TDP Series

The TDP series features a compact design and high-performance engine and is ideal for healthcare, retail and asset tagging labeling applications.

Model	Resolution	Max. Print Width	Max. Print Length	Max. Print Speed	Dimensions (W x H x D)	Weight	Tools	Key Features
TDP-225	203 dpi	2.13"	90"	6 ips	109mm x 171mm x 209mm 4.29" x 6.73" x 8.23"	1.2kg	TSC Console TSCPRTGo	<ul style="list-style-type: none"> <li>High quality double-walled clamshell design</li> <li>Up to 152.4mm (6") per second print speed</li> <li>Serial and USB 2.0 connectivity</li> </ul>
TDP-324	300 dpi	1.89"	40"	4 ips				
TDP-225W	203 dpi	2.05"	90"	6 ips	109mm x 210mm x 260mm 4.29" x 8.27" x 10.24"	1.2kg	TSC Console TSCPRTGo	<ul style="list-style-type: none"> <li>Designed to hold 6.5" OD wristbands</li> <li>Front LCD display</li> <li>Ethernet and USB 2.0 connectivity</li> </ul>
TDP-324W	300 dpi	1.89"	40"	4 ips				
TDP-247	203 dpi	4.25"	90"	7 ips	200mm x 164mm x 240mm 7.87" x 6.46" x 9.45"	1.9kg		<ul style="list-style-type: none"> <li>Up to 177.8mm (7") per second print speed</li> <li>Drop-in media loading</li> <li>5" OD internal media supply, optional external roll mount supports 8.4" OD label rolls on 1" or 3" cores</li> </ul>
TDP-345	300 dpi	4.17"	40"	5 ips				



## DH Series

The DH series is highly comprehensive and adaptive to diverse printing requirements and designed to conquer various printing challenges. With future-proof addable upgrade modules, the DH series supports versatile labeling applications for medications, specimens, take-out food, weighing scales, entertainment tickets, shipping, linerless and so forth.

Model	Resolution	Max. Print Width	Max. Print Length	Max. Print Speed	Dimensions (W x H x D)	Weight	Tools	Key Features	
DH220/DH220T	203 dpi	2.13"	1,000"	8 ips	138mm x 172mm x 210mm 5.43" x 6.77" x 8.27"	1.6kg	TSC Console TSC Standalone Creator TSCPRTGo SOTI Connect	<ul style="list-style-type: none"> <li>• Auto switch print language emulation</li> <li>• Future-proof addable upgrade including connectivity, peeler, cutter (linerless) and narrow media adapter</li> <li>• Media damper mechanism for high-precision printing</li> <li>• Vertical DPI adjustment algorithm minimizes printing deviation</li> <li>• Internal Embedded Webpage and virtual control panel for real-time remote printer management</li> </ul>	
DH320/DH320T	300 dpi	2.24"	450"	6 ips					
DH220E	203 dpi	2.13"	90"	8 ips	208mm x 170mm x 235mm 8.19" x 6.69" x 9.25"	2.1kg	TSC Console		
DH320E	300 dpi	2.24"	40"	6 ips					
DH240T	203 dpi	4.25"	1,000"	8 ips	138mm x 172mm x 210mm 5.43" x 6.77" x 8.27"	1.6kg	TSC Console TSC Standalone Creator TSCPRTGo SOTI Connect		
DH340T	300 dpi	4.16"	450"	6 ips					
DH220THC	203 dpi	2.13"	1,000"	8 ips	208mm x 170mm x 235mm 8.19" x 6.69" x 9.25"	2.1kg	TSC Console TSC Standalone Creator TSCPRTGo SOTI Connect		<ul style="list-style-type: none"> <li>• Crisp white and bright full-color scheme</li> <li>• Antimicrobial and disinfectant-ready casing</li> <li>• IEC 60601-1 Medical-Grade standard power supply</li> </ul>
DH320THC	300 dpi	2.24"	450"	6 ips					
DH240THC	203 dpi	4.25"	1,000"	8 ips					
DH340THC	300 dpi	4.16"	450"	6 ips					

## TL Series

The TL Series 4-inch desktop barcode printers are optimized for easy media and ribbon loading, making them ideal for daily print jobs. They feature auto-switching printer language emulation, a media window for monitoring media consumption, and real-time remote monitoring through TSC Console to simplify daily operations.

Model	Resolution	Max. Print Width	Max. Print Length	Max. Print Speed	Dimensions (W x H x D)	Weight	Tools	Key Features
TL240*	203 dpi	4.25"	1,000"	6 ips	211mm x 164mm x 279mm 8.31" x 6.46" x 10.98"	2kg	TSC Console	<ul style="list-style-type: none"> <li>• Supports multiple media types, with a print width of up to 108mm and a length of up to 25,400mm.</li> <li>• Tool-free TPH (thermal printhead) removal and replacement for easy maintenance</li> <li>• Media window for quick supply level checks</li> </ul>
TL340*	300 dpi	4.16"	450"	4 ips				
TL241*	203 dpi	4.25"	1,000"	6 ips				
TL341*	300 dpi	4.16"	450"	4 ips				

\*Product availability varies among regions; please contact your local sales representative for more information.





## TE Series

The TE Series features our value-leading, most affordable desktop printer models. The TE Series models offer a popular footprint to meet nearly any customer's label printing needs at an attractive price.

Model	Resolution	Max. Print Width	Max. Print Length	Max. Print Speed	Dimensions (W x H x D)	Weight	Tools	Key Features
<b>TE200</b>	203 dpi	4.25"	110"	6 ips	204mm x 164mm x 280mm 8.03" x 6.46" x 11.02"	2.4kg	TSC Console TSCPRTGo	<ul style="list-style-type: none"> <li>Supports both 1" core 300m long ribbon roll or 0.5" core 110m long ribbon roll.</li> <li>Multiple interfaces: Ethernet, USB, USB host, and serial (for TE210 and TE310)</li> <li>5" OD internal media supply, optional external roll mount supports 8.4" OD</li> <li>Print mechanism for kiosk applications</li> </ul>
<b>TE300</b>	300 dpi	4.16"	40"	5 ips				
<b>TE210</b>	203 dpi	4.25"	1,000"	6 ips				
<b>TE310</b>	300 dpi	4.16"	450"	5 ips				



## TC Series

The TC Series can produce 4-inch-wide labels, tags or receipts at up to 6 ips, offering one of the best price-performance combinations on the desktop printer market.

Model	Resolution	Operation	Max. Print Width	Max. Print Length	Max. Print Speed	Dimensions (W x H x D)	Weight	Tools	Key Features
<b>TC200</b>	203 dpi	1 button,	4.25"	90"	6 ips	203mm x 191.5mm x 259.3mm 7.99" x 7.54" x 10.21"	2.2kg	TSC Console TSCPRTGo	<ul style="list-style-type: none"> <li>Multiple interfaces: Ethernet, USB, USB host (TC210/TC310), parallel (TC200/TC300), and serial</li> <li>Rugged double wall construction</li> <li>Use standard 0.5" notched core ribbons</li> </ul>
<b>TC300</b>	300 dpi	1 tricolor LED	4.15"	40"	4 ips				
<b>TC210</b>	203 dpi	6 buttons, color LCD	4.25"	1,000"	6 ips				
<b>TC310</b>	300 dpi	display	4.15"	450"	4 ips				



## TTP Series

The TTP Series brings TSC quality, innovation, reliability and value in a small printer footprint. It delivers premium performance for most retail, medical and office applications at an affordable price.

Model	Resolution	Max. Print Width	Max. Print Length	Max. Print Speed	Dimensions (W x H x D)	Weight	Tools	Key Features
<b>TTP-225</b>	203 dpi	2.13"	90"	5 ips	140mm x 177mm x 241mm 5.51" x 6.97" x 9.49"	2.5kg	TSC Console TSCPRTGo	<ul style="list-style-type: none"> <li>Small size - space saving design</li> <li>Easy media loading</li> <li>High quality double walled clamshell design</li> </ul>
<b>TTP-323</b>	300 dpi	2.13"	40"	3 ips				
<b>TTP-247</b>	203 dpi	4.25"	90"	7 ips	213mm x 188mm x 314mm 8.39" x 7.40" x 12.36"	2.8kg		<ul style="list-style-type: none"> <li>Uses 300m ribbons</li> <li>Dual-motor design</li> <li>Up to 177.8mm (7") per second print speed</li> </ul>
<b>TTP-345</b>	300 dpi	4.17"	40"	5 ips				



## TH Series

The TH series is highly comprehensive and adaptive to diverse printing requirements and designed to conquer various printing challenges. Featuring a 10mm to up to 120mm media width range, the TH Series has high adaptivity to diverse media types. Along with the media damper, and addable upgrade modules, the TH series is compatible with special media types such as cable labeling, car plates, medical wristbands, apparel tags, care labels and more.

Model	Resolution	Max. Print Width	Max. Print Length	Max. Print Speed	Dimensions (W x H x D)	Weight	Tools	Key Features
TH220T	203 dpi	2.13"	1,000"	8 ips	146mm x 179mm x 231mm 5.75" x 7.05" x 9.09"	1.8kg	TSC Console TSC Standalone Creator TSCPRTGo SOTI Connect	<ul style="list-style-type: none"> <li>• Auto switch print language emulation</li> <li>• Future-proof addable upgrade including connectivity, peeler, cutter (regular) and narrow media adapter</li> <li>• Media damper mechanism for high-precision printing</li> <li>• Vertical DPI adjustment algorithm minimizes printing deviation</li> <li>• Internal Embedded Webpage and virtual control panel for real-time remote printer management</li> </ul>
TH320T	300 dpi	2.24"	450"	6 ips				
TH240/TH240T	203 dpi	4.25"	1,000"	8 ips	223mm x 186mm x 286mm 8.78" x 7.32" x 11.26"	2.8kg		
TH340/TH340T	300 dpi	4.16"	450"	6 ips				
TH220THC	203 dpi	2.13"	1,000"	8 ips	146mm x 179mm x 231mm 5.75" x 7.05" x 9.09"	1.8kg		
TH320THC	300 dpi	2.24"	450"	6 ips				
TH240THC	203 dpi	4.25"	1,000"	8 ips	223mm x 186mm x 286mm 8.78" x 7.32" x 11.26"	2.8kg		
TH340THC	300 dpi	4.16"	450"	6 ips				

## TX Series

Available in three models, the TX Series is ideal for printing high volume shipping labels, high resolution product marking and graphic solutions.

Model	Resolution	Max. Print Width	Max. Print Length	Max. Print Speed	Dimensions (W x H x D)	Weight	Tools	Key Features
TX210	203 dpi	4.25"	1,000"	8 ips	226mm x 198mm x 332mm 8.90" x 7.80" x 13.07"	3.8kg	TSC Console TSCPRTGo SOTI Connect	<ul style="list-style-type: none"> <li>• Large memory capacity - 128 MB Flash and 128 MB SDRAM</li> <li>• Label capacity up to 127mm (5") OD</li> <li>• Up to 203mm (8") per second print speed</li> <li>• 3.5" color TFT Display (Standard for TX610, Optional for TX210 and TX310)</li> <li>• USB host interface for standalone application</li> </ul>
TX310	300 dpi	4.17"	450"	6 ips		3.8kg		
TX610	600 dpi	4.17"	100"	4 ips	226mm x 200mm x 332mm 8.90" x 7.87" x 13.07"	4.1kg		

## T800 Series

The T800 high-performance desktop printer incorporates the features and functions normally expected in an industrial printer. With a compact footprint, large supplies capacity, advanced Wi-Fi and MFi Bluetooth® support, and optional UHF RFID, this printer offers great value for lower print volume enterprise applications.

Model	Resolution	Max. Print Width	Max. Print Length	Max. Print Speed	Dimensions (W x H x D)	Weight	Tools	Key Features
T820	203 dpi	4.1"	50"	8 ips	210mm x 190mm x 285mm 8.3" x 7.5" x 11.2"	2.9kg	PrintNet Enterprise SOTI Connect	<ul style="list-style-type: none"> <li>• High print speed at up to 8 ips and print volumes up to 2,500 4x6" labels per day</li> <li>• Large supplies capacity with 5" media roll and 300m ribbon</li> <li>• PSA suite with nine competitor printer languages, unified control panel, and advanced Wi-Fi</li> <li>• Optional cutter and peel-off media handling</li> <li>• Optional RAIN UHF RFID encoding, automatic RFID label calibration</li> </ul>
T830	300 dpi	4.1"	50"	6 ips				





# Industrial Printers

Our industrial thermal label printers are designed for high-performance, high-volume printing, delivering high-quality labels for nearly any industrial application.

With some of our fastest print speeds and premium printhead technology, they produce high-quality, crisp, and clear labels. Our printers come with enhanced features such as color LCD displays, multiple resolutions, and extensive communication options, including Wi-Fi and Bluetooth®.

Among these models, our enterprise-grade printers are built for demanding environments. Available in various sizes, they deliver high performance, flexibility, and reliable wireless connectivity, with optional add-ons such as RFID and ODV-2D barcode inspection to enhance capabilities.



## ML Series

The compact ML Series is designed for height-constrained applications. It offers easy adjustments, toolless maintenance, and seamless deployment with auto-switching emulation. The latest ML Series handles label rolls up to 8 inches in diameter, perfect for high-volume printing. Advanced remote printer management is supported by SOTI Connect, TSC Console, and an Internal Embedded Webpage.

Model	Resolution	Max. Print Width	Max. Print Length	Max. Print Speed	Dimensions (W x H x D)	Weight	Tools	Key Features
<b>ML241P*</b>	203 dpi	4.25"	1,000"	8 ips	248mm x 245mm x 416mm 9.76" x 9.65" x 16.38"	7.7kg	TSC Console TSC Standalone Creator TSCPRTGo SOTI Connect	<ul style="list-style-type: none"> <li>• Small footprint ideal for height-constrained spaces</li> <li>• User-friendly design for easy daily operations</li> <li>• Tool-free adjustments for thermal printhead and ribbon tension</li> <li>• Supports 8-inch OD label rolls</li> </ul>
<b>ML341P*</b>	300 dpi	4.16"	450"	6 ips				

\*Not currently available in the US and Canada.



## MB Series

The MB Series industrial label printers deliver durable, high-quality thermal printing with an all-metal mechanism for versatile applications. The MB241 Series has a bifold media door that reduces space requirements by 24%, accommodates label rolls up to 8 inches in diameter, and handles special media types like thick hangtags. Optional accessories, including linerless kits, peel-off kits, and internal rewinders, enhance versatility.

Model	Resolution	Max. Print Width	Max. Print Length	Max. Print Speed	Dimensions (W x H x D)	Weight	Tools	Key Features
<b>MB241*</b>	203 dpi	4.21"	1,000"	12 ips	248mm x 274mm x 436mm 9.76" x 10.79" x 17.17"	9.1kg	TSC Console TSC Standalone Creator TSCPRTGo SOTI Connect	<ul style="list-style-type: none"> <li>• Bifold media door enhances space efficiency</li> <li>• All-metal print mechanism for durability and high-quality printing</li> <li>• Diverse accessories support versatile applications</li> </ul>
<b>MB341*</b>	300 dpi	4.16"	450"	9 ips				
<b>MB241T</b>	203 dpi	4.21"	1,000"	12 ips				
<b>MB341T</b>	300 dpi	4.16"	450"	9 ips				

\*Not currently available in the US, Canada and Latin America.



## MH Series

The MH Series is our flagship industrial barcode label printer with premium printhead technology, fast processor, and memory capacity to print high quality labels at the fastest speeds.

Model	Resolution	Max. Print Width	Max. Print Length	Max. Print Speed	Dimensions (W x H x D)	Weight	Tools	Key Features
<b>MH241*/MH241T</b>	203 dpi	4.09"	1,000"	14 ips	276mm x 326mm x 502mm 10.87" x 12.83" x 19.76"	15.6kg/ 15.7kg	TSC Console TSC Standalone Creator TSCPRTGo SOTI Connect	<ul style="list-style-type: none"> <li>• Supports top and bottom black mark media and selectable media sensor settings on display menu</li> <li>• Capable of peeling off minimum 0.5" small label in length (MH241/MH341/MH641 and MH241T/ MH341T/MH641T)</li> <li>• Supports 8" OD full roll internal rewinder (Only on MH241P/ MH341P/MH641P)</li> <li>• Easy printhead and platen roller replacement</li> <li>• TSC Standalone Creator is available for MH241T/MH341T/MH641T/MH241P/MH341P/MH641P</li> </ul>
<b>MH341*/MH341T</b>	300 dpi	4.09"	450"	12 ips				
<b>MH641*/MH641T</b>	600 dpi	4.09"	100"	6 ips				
<b>MH241P</b>	203 dpi	4.09"	1,000"	14 ips	276mm x 412mm x 502mm 10.87" x 16.22" x 19.76"	18.9kg		
<b>MH341P</b>	300 dpi	4.09"	450"	12 ips				
<b>MH641P</b>	600 dpi	4.09"	100"	6 ips				
<b>MH261T</b>	203 dpi	6.61"	580"	12 ips	357mm x 313mm x 514mm 14.05" x 12.32" x 20.24"	17.8kg	<ul style="list-style-type: none"> <li>• High quality die-cast aluminum design</li> <li>• Supports media width up to 6.8"</li> <li>• Easy printhead and platen roller replacement</li> </ul>	
<b>MH361T</b>	300 dpi	6.61"	260"	10 ips				

\*Not currently available in the US, Canada and Latin America.





## TTP Series

With its high quality printhead and fast processor, the TTP Series is ideal for a wide range of compliance labeling, inventory control, drum labeling, warning signs and a host of other signage solutions.

Model	Resolution	Max. Print Width	Max. Print Length	Max. Print Speed	Dimensions (W x H x D)	Weight	Tools	Key Features
TTP-286MT	203 dpi	8.5"	450"	6 ips	440mm x 336mm x 514mm 17.32" x 13.23" x 20.24"	23.7kg	TSC Console TSC Standalone Creator TSCPRTGo	<ul style="list-style-type: none"> <li>Die-cast chassis, sheet metal structure with clear media view window</li> <li>Can manage label widths up to 9.5" with a maximum print width up to 8.64" wide at 300 dpi high resolution</li> <li>600m ribbon supply</li> </ul>
TTP-384MT	300 dpi	8.64"	200"	4 ips				



## MX Series

Featuring our fastest print speeds ever, the MX Series boosts productivity with and is ideal for applications that include manufacturing, logistics, shipping, and product identification.

Model	Resolution	Max. Print Width	Max. Print Length	Max. Print Speed	Dimensions (W x H x D)	Weight	Tools	Key Features
MX241P	203 dpi	4.09"	1,000"	18 ips	300mm x 393mm x 510mm 11.81" x 15.47" x 20.08"	18kg	TSC Console TSC Standalone Creator TSCPRTGo SOTI Connect	<ul style="list-style-type: none"> <li>Heavy duty die-cast aluminum design</li> <li>Fast print speed - up to 18 ips</li> <li>4.3" color TFT touch panel with 6-key button design for new GUI</li> <li>600m ribbon capacity</li> </ul>
MX341P	300 dpi	4.09"	450"	14 ips				
MX641P	600 dpi	4.09"	100"	6 ips				



## T4000 Series

The compact T4000 industrial printer works well for medium duty applications and where workspace is a premium. With a large supplies capacity, advanced Wi-Fi and MFi Bluetooth® support, and optional UHF RFID, this printer is a great option for medium duty enterprise applications.

Model	Resolution	Max. Print Width	Max. Ribbon Length	Max. Print Speed	Dimensions (W x H x D)	Weight	Tools	Key Features
T4204	203 dpi	4.1"	450m	12 ips	264mm x 276mm x 455mm 10.40" x 10.9" x 17.9"	10kg	PrintNet Enterprise SOTI Connect	<ul style="list-style-type: none"> <li>High print speed at up to 12 ips and print volumes up to 5,000 4x6" labels per day</li> <li>Large supplies capacity with 8" media roll and 450m ribbon</li> <li>PSA suite with nine competitor printer languages, unified control panel, and advanced Wi-Fi</li> <li>Optional cutter and peel-off media handling</li> <li>Optional RAIN UHF RFID encoding with support for standard RFID labels and on-metal tags</li> </ul>
T4304	300 dpi	4.1"	450m	10 ips				



## T6000e Series

The T6000e sets the standard for productivity and versatility in fast paced environments where speed, exceptional print quality, and advanced features are needed. With the ability to support both RFID and barcode verification in a single printing solution, the T6000e truly stands apart from its rivals.

Model	Resolution	Max. Print Width	Max. Ribbon Length	Max. Print Speed	Dimensions (W x H x D)	Weight	Tools	Key Features
<b>T6204e</b>	203 dpi	4.1"	450m	14 ips	297.2mm x 330.2mm x 520.7mm 11.7" x 13" x 20.5"	16.7kg	PrintNet Enterprise SOTI Connect	<ul style="list-style-type: none"> <li>• Multiple options and configurations available</li> <li>• 4" and 6" print widths available</li> <li>• 600 dpi option for small labels and barcodes</li> <li>• Support for standard smart labels, on-metal tags and many other tag constructions</li> <li>• With optional ODV barcode verifier, inspect, grade and encode RFID labels with a single printer</li> </ul>
<b>T6304e</b>	300 dpi	4.1"	450m	12 ips				
<b>T6604e</b>	600 dpi	4.1"	450m	6 ips				
<b>T6206e</b>	203 dpi	6.5"	450m	12 ips	340.4mm x 330.2mm x 520.7mm 13.4" x 13" x 20.5"	18.1kg		
<b>T6306e</b>	300 dpi	6.5"	450m	10 ips				



## T8000 Series

Our flagship product, the T8000 is our most durable and reliable, 24/7 enterprise printer. Offered in 4-inch, 6-inch, and 8-inch versions, it supports high print volume applications in challenging production environments such as in cold conditions down to -5 °C (23 °F). It is also available with our integrated barcode verifier to ensure barcode quality in compliance and regulatory applications.

Model	Resolution	Max. Print Width	Max. Ribbon Length	Max. Print Speed	Dimensions (W x H x D)	Weight	Tools	Key Features
<b>T8204</b>	203 dpi	4.1"	625m	14 ips	297.2mm x 330.2mm x 520.7mm 11.7" x 13" x 20.5"	16.7kg	PrintNet Enterprise SOTI Connect	<ul style="list-style-type: none"> <li>• High print speed at up to 14 ips and print volumes up to 15,000 4x6" labels per day</li> <li>• Large supplies capacity with 8" media roll and 625m ribbon</li> <li>• PSA suite with nine competitor printer languages, unified control panel, and advanced Wi-Fi</li> <li>• Optional cutter, peel-off, and batch rewind media handling</li> <li>• Optional ODV-2D integrated real-time barcode verifier</li> </ul>
<b>T8304</b>	300 dpi	4.1"	625m	12 ips				
<b>T8206</b>	203 dpi	6.6"	625m	12 ips	340.4mm x 330.2mm x 520.7mm 13.4" x 13" x 20.5"	18.1kg		
<b>T8306</b>	300 dpi	6.6"	625m	10 ips				
<b>T8208</b>	203 dpi	8.5"	625m	10 ips	391.2mm x 330.2mm x 520.7mm 15.4" x 13" x 20.5"	19.5kg		
<b>T8308</b>	300 dpi	8.5"	625m	8 ips				

# Mobile Printers

Print receipts and labels on the go and on demand. Our small, lightweight, and rugged mobile printers have a long battery life and are made to last the entire workday. Efficiently print at the point of application to reduce downtime and increase production. Our mobile printers are capable of printing linerless labels to help reduce waste and boost productivity. A full line of accessories are available. RFID mobile printer option is also available to allow workers to print and encode labels hands-free in challenging working environment.







## TDM Series

The TDM Series features a rugged palm-sized design for easy, on-the-go printing for up to 42 hours on a single battery charge.

Model	Resolution	Max. Print Width	Max. Print Length	Max. Print Speed	Dimensions (W x H x D)	Weight	Tools	Key Features
<b>TDM-20</b>	203 dpi	1.89"	110"	4 ips	79.0mm x 116.0mm x 36.5mm 3.11" x 4.57" x 1.44"	215g	TSC Console	<ul style="list-style-type: none"> <li>High capacity 1130 mAh &amp; 3080 mAh Lithium Ion battery operates up to 17/42 hours of use per battery charge</li> <li>Self-Diagnostic TPH Care Mechanism</li> <li>Optional Smart Battery for TDM-30 with TSC Printer Management</li> </ul>
<b>TDM-30</b>	203 dpi	2.83"	110"	4 ips	105.0mm x 116.0mm x 49.5mm 4.13" x 4.57" x 1.95"	375g		



## RE Series

The robust RE310 is designed for daily receipt and label printing. It features IP54 protection for durability, a long-lasting battery to support full-shift operation, dual-band Wi-Fi, advanced Bluetooth 5.3 connectivity for fast data transmission, and tap-to-pair NFC pairing for seamless handheld operation.

Model	Resolution	Max. Print Width	Max. Print Length	Max. Print Speed	Dimensions (W x H x D)	Weight	Tools	Key Features
<b>RE310*</b>	203 dpi	2.83"	110"	4 ips	115.0mm x 125.0mm x 63.0mm 4.53" x 4.92" x 2.48"	440g	TSC Console TSCPRTGo	<ul style="list-style-type: none"> <li>IP54 rating and withstands a 1.5-meter drop</li> <li>USC Type-C compatibility for efficient fast charging</li> <li>Dual-band Wi-Fi and advanced Bluetooth 5.3 connectivity</li> <li>High-capacity 3,080mAh battery lasts an entire shift without downtime</li> <li>Adjustable media holder fits various label widths from 20mm to 80mm</li> </ul>

\*Limited availability in the US and Canada, please contact your local sales representative.

## Alpha-2R

The Alpha-2R is a comfortable, light-weight printer capable of working with any mobile printing application where you need access to quick, simple receipts or tickets.



Model	Resolution	Max. Print Width	Max. Print Length	Max. Print Speed	Dimensions (W x H x D)	Weight	Tools	Key Features
<b>Alpha-2R*</b>	203 dpi	1.89"	90"	4 ips	89.3mm x 134.5mm x 56.5mm 3.52" x 5.3" x 2.22"	350g	TSC Console	<ul style="list-style-type: none"> <li>Energy Star 2.0 compliant printer with high capacity 1620 mAh Lithium Ion battery operates up to 17 hours of use per battery charge</li> <li>Largest media capacity in the 2" receipt market supports 58mm wide and 50mm outer diameter receipt roll</li> <li>Wi-Fi CERTIFIED™</li> </ul>

\*Limited availability in the US, Canada and Latin America, please contact your local sales representative.



## Alpha-3R

The Alpha-3R is a comfortable, light-weight printer capable of printing labels on demand. It is built for durability and can withstand up to 5-foot falls and keep printing.

Model	Resolution	Max. Print Width	Max. Print Length	Max. Print Speed	Dimensions (W x H x D)	Weight	Tools	Key Features
<b>Alpha-3R*</b>	203 dpi	2.83"	90"	4 ips	116mm x 148mm x 70mm 4.57" x 5.83" x 2.75"	550g	TSC Console	<ul style="list-style-type: none"> <li>Large paper capacity to reduce the frequency of changing paper roll</li> <li>High-speed processor and extensive memory for fast print speeds of up to 4" (102mm) per second</li> <li>Lasts more than 30 hours of printing receipts/selected labels on a single battery charge</li> </ul>

\*Limited availability in the US, Canada and Latin America, please contact your local sales representative.



## Alpha-30R

The Alpha-30R mobile printer is user-friendly and drop-resistant. It enhances customer service, boosts productivity and improves shopper experience in retail stores. The Alpha-30R is stylish and comfortable in use and prints receipts or labels on-demand. Mobile printing operations can be carried out much faster and with more accuracy.

Model	Resolution	Max. Print Width	Max. Print Length	Max. Print Speed	Dimensions (W x H x D)	Weight	Tools	Key Features
<b>Alpha-30R Basic</b>	203 dpi	2.83"	110"	5 ips	118mm x 158mm x 68mm 4.64" x 6.22" x 2.68"	650g	TSC Console SOTI Connect	<ul style="list-style-type: none"> <li>IP54 rated and withstands 1.0m (3.3ft) tumble</li> <li>Tested to be drop-proof/vibration-proof, with MIL-STD-810 certification</li> <li>Withstand 2.1m (6.9ft) drop</li> <li>Easy connectivity via MFi Bluetooth® 5.0 with NFC tap-to-pair</li> <li>Reliable and secured dual-band 802.11ac Wi-Fi with fast roaming</li> </ul>
<b>Alpha-30R Premium</b>	203 dpi	2.83"	110"	6 ips				



## Alpha-30L / Alpha-40L

The Alpha-30L and Alpha-40L mobile printers propel you into the next generation of smart, enhanced technology solutions for industrial-grade label printing applications. They also provide a full line of accessories to assist in performing diverse labeling tasks while on the go, especially in rigorous logistics applications.

Model	Resolution	Max. Print Width	Max. Print Length	Max. Print Speed	Dimensions (W x H x D)	Weight	Tools	Key Features
<b>Alpha-30L</b>	203 dpi	2.83"	110"	5 ips	117mm x 173mm x 79mm 4.61" x 6.81" x 3.11"	745g	TSC Console SOTI Connect	<ul style="list-style-type: none"> <li>IP54-rated and withstands 1.0m tumble</li> <li>Withstands up to 6 ft. (1.8m) drop, 8.2 ft. (2.5m) with protective case</li> <li>Built-in peeler or linerless kit option</li> <li>TSC Sense Care to monitor smart battery and printhead status</li> <li>RFID (Alpha-40L only), please refer to page 28</li> </ul>
<b>Alpha-40L</b>	203 dpi	4.09"	110"	5 ips	160mm x 191mm x 79mm 6.30" x 7.52" x 3.11"	985g		
<b>Alpha-30LHC*</b>	203 dpi	2.83"	110"	5 ips	117mm x 173mm x 79mm 4.61" x 6.81" x 3.11"	745g	TSC Console SOTI Connect	<ul style="list-style-type: none"> <li>Clean white and grey color scheme</li> <li>Antimicrobial and disinfectant-ready casing</li> <li>IEC 60601-1 Medical-Grade standard power supply</li> </ul>

\*Not currently available in the US, Canada and Latin America.



# Print Engines

Our print engines are purpose-built for any print and apply system. It can be easily integrated to meet any application. The robust design can withstand harsh environments and ensure performance for years to come.







## PEX-2000 Series

The 4-inch and 6-inch PEX-2000 Print Engine was designed to easily integrate into any label applicator, and can operate 24/7 to maximize uptime. It greatly reduces printer integration time and effort while speeding up time-to-market for automatic labelers. Available for RFID option in all models.

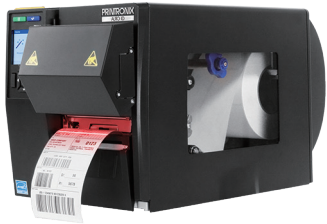
Model	Resolution	Max. Print Width	Max. Print Length	Max. Print Speed	Dimensions (W x H x D)	Weight	Tools	Key Features
PEX-2240L PEX-2240R	203 dpi	4.09"	1,000"	18 ips				
PEX-2340L PEX-2340R	300 dpi	4.09"	450"	14 ips	245mm x 300mm x 390mm 9.65" x 11.81" x 15.35"	12.7kg		
PEX-2640L PEX-2640R	600 dpi	4.09"	100"	6 ips			TSC Console SOTI Connect	<ul style="list-style-type: none"> <li>• Easily fit into any label applicator</li> <li>• Supports DB15 &amp; DB25 interface and GPIO emulations</li> <li>• Supports major printer languages with customizable firmware</li> <li>• Top black mark sensor for preprinted labels</li> <li>• Robust metal chassis withstands harsh environments</li> <li>• Support RFID (Optional)</li> <li>• Support ribbon saver (Optional)</li> </ul>
PEX-2260L PEX-2260R	203 dpi	6.61"	580"	14 ips				
PEX-2360L PEX-2360R	300 dpi	6.61"	260"	12 ips	245mm x 300mm x 450mm 9.65" x 11.81" x 17.71"	14.4kg		



# Barcode Inspection Printers

Our barcode inspection technology is integrated into our Enterprise industrial thermal printers. Easy to use, our barcode verification and validation technology reads each barcode as it is printed, strikes out rejected barcodes, and reprints a new label automatically. Our barcode inspection printers give customers confidence that every barcode label they send out will be accurate and printed at the highest level of quality. The ODV-2D pays for itself by eliminating costly chargebacks and fines for non-conforming labels. Available as an option on the T8000 and T6000e thermal printers.





## T6000e ODV-2D

The award-winning T6000e with ODV-2D inline barcode inspection technology is also compatible with the optional top-of-the-line RFID high-speed encoding abilities.

Model	Resolution	Max. Print Width	Max. Ribbon Length	Max. Print Speed	Dimensions (W x H x D)	Weight	Tools	Key Features
<b>T6204e ODV-2D</b>	203 dpi	4.1"	450m	8 ips	276.86mm x 312.42mm x 558.8mm 10.9" x 12.3" x 22"	16.3kg	PrintNet Enterprise SOTI Connect	<ul style="list-style-type: none"> <li>The ODV-2D is an optional fully-integrated barcode inspection system, and ships pre-mounted</li> <li>Automatically finds, reads, grades, and reports results for every barcode on every label</li> <li>Works with all major thermal printer languages, as well as Postscript and PDF</li> <li>Automatically overstrikes and reprints any label with missing or low quality barcodes</li> <li>Easy settings for threshold grade level and recovery actions</li> <li>Compatible with the optional 600dpi printing and RFID encoding feature</li> </ul>
<b>T6304e ODV-2D</b>	300 dpi	4.1"	450m	8 ips				
<b>T6604e ODV-2D</b>	600 dpi	4.1"	450m	6 ips				



## T8000 ODV-2D

Our most versatile enterprise-grade industrial printer, the T8000 Series with ODV-2D integrated barcode inspection takes productivity and performance to new heights.

Model	Resolution	Max. Print Width	Max. Ribbon Length	Max. Print Speed	Dimensions (W x H x D)	Weight	Tools	Key Features
<b>T8204 ODV-2D</b>	203 dpi	4.1"	625m	8 ips	297.18mm x 330.2mm x 558.8mm 11.7" x 13" x 22"	18.1kg	PrintNet Enterprise SOTI Connect	<ul style="list-style-type: none"> <li>The ODV-2D is an optional fully-integrated barcode inspection system, and ships pre-mounted (4" only)</li> <li>Automatically finds, reads, grades, and reports results for every barcode on every label</li> <li>Works with all major thermal printer languages, as well as Postscript and PDF</li> <li>Automatically overstrikes and reprints any label with missing or low quality barcodes</li> <li>Easy settings for threshold grade level and recovery actions</li> <li>Available with optional cutter and protective cover (4" only)</li> </ul>
<b>T8304 ODV-2D</b>	300 dpi	4.1"	625m	8 ips				
<b>T8206 ODV-2D</b>	203 dpi	6.5"	625m	8 ips	340.36mm x 137.41mm x 609.6mm 13.4" x 14.5" x 24"	19.4kg		
<b>T8306 ODV-2D</b>	300 dpi	6.5"	625m	8 ips				



# Healthcare

The hygienic design of our healthcare printers aims to provide long-lasting antimicrobial protection and easy disinfection, minimizing contamination risks. It adheres to the IEC 60601-1 Medical-Grade standard, ensuring a safe and reliable power supply in healthcare facilities.



## Alpha-30L



The Alpha-30L mobile printers propel you into the next generation of smart, enhanced technology solutions for industrial-grade label printing applications. They also provide a full line of accessories to assist in performing diverse labeling tasks while on the go.

Model	Resolution	Max. Print Width	Max. Print Length	Max. Print Speed	Dimensions (W x H x D)	Weight	Tools	Key Features
Alpha-30LHC*	203 dpi	2.83"	110"	5 ips	117mm x 173mm x 79mm 4.61" x 6.81" x 3.11"	0.745kg	TSC Console SOTI Connect	<ul style="list-style-type: none"> <li>Clean white and grey color scheme</li> <li>Antimicrobial and disinfectant-ready casing</li> <li>IEC 60601-1 Medical-Grade standard power supply</li> </ul>

\*Not currently available in the US, Canada and Latin America.

## DA Series



The DA Series features a user-friendly design ideal for a wide variety of applications including product marking, point of sale, retail, small office, shipping labels, and many more at a very competitive price.

Model	Resolution	Max. Print Width	Max. Print Length	Max. Print Speed	Dimensions (W x H x D)	Weight	Tools	Key Features
DA220HC*	203 dpi	4.25"	1,000"	6 ips	172mm x 165mm x 195mm	1.5kg	TSC Console TSCPRTGo	<ul style="list-style-type: none"> <li>Crisp white and bright full-color scheme</li> <li>Antimicrobial and disinfectant-ready casing</li> <li>IEC 60601-1 Medical-Grade standard power supply</li> </ul>
DA320HC*	300 dpi	4.16"	450"	4 ips	6.77" x 6.50" x 7.68"			

\*Not currently available in the US, Canada and Latin America.

## DH Series



The DH series is highly comprehensive and adaptive to diverse printing requirements and designed to conquer various printing challenges. With future-proof addable upgrade modules, the DH series supports versatile labeling applications for medications, specimens, take-out food, weighing scales, entertainment tickets, shipping, linerless and so forth.

Model	Resolution	Max. Print Width	Max. Print Length	Max. Print Speed	Dimensions (W x H x D)	Weight	Tools	Key Features
DH220THC	203 dpi	2.13"	1,000"	8 ips	138mm x 172mm x 210mm	1.6kg	TSC Console TSC Standalone Creator	<ul style="list-style-type: none"> <li>Crisp white and bright full-color scheme</li> <li>Antimicrobial and disinfectant-ready casing</li> <li>IEC 60601-1 Medical-Grade standard power supply</li> </ul>
DH320THC	300 dpi	2.24"	450"	6 ips	5.43" x 6.77" x 8.27"			
DH240THC	203 dpi	4.25"	1,000"	8 ips	208mm x 170mm x 235mm	2.1kg	TSCPRTGo SOTI Connect	
DH340THC	300 dpi	4.16"	450"	6 ips	8.19" x 6.69" x 9.25"			

## TH Series



The TH series is highly comprehensive and adaptive to diverse printing requirements and designed to conquer various printing challenges. Featuring a 10mm to up to 120mm media width range, the TH Series has high adaptivity to diverse media types. Along with the media damper, and addable upgrade modules, the TH series is compatible with special media types such as cable labeling, car plates, medical wristbands, apparel tags, care labels and more.

Model	Resolution	Max. Print Width	Max. Print Length	Max. Print Speed	Dimensions (W x H x D)	Weight	Tools	Key Features
TH220THC	203 dpi	2.13"	1,000"	8 ips	146mm x 179mm x 231mm	1.8kg	TSC Console TSC Standalone Creator	<ul style="list-style-type: none"> <li>Crisp white and bright full-color scheme</li> <li>Antimicrobial and disinfectant-ready casing</li> <li>IEC 60601-1 Medical-Grade standard power supply</li> </ul>
TH320THC	300 dpi	2.24"	450"	6 ips	5.75" x 7.05" x 9.09"			
TH240THC	203 dpi	4.25"	1,000"	8 ips	223mm x 186mm x 286mm	2.8kg	TSCPRTGo SOTI Connect	
TH340THC	300 dpi	4.16"	450"	6 ips	8.78" x 7.32" x 11.26"			





# Linerless

Linerless labeling offers a sustainable alternative. Our anti-adhesive linerless printers ensure smooth operations, high print quality, easy maintenance, and broad compatibility with validated media. Depending on the region, we offer both printers and media to serve our customers.





## Alpha-30R

The Alpha-30R mobile printer is user-friendly and drop-resistant. It enhances customer service, boosts productivity and improves shopper experience in retail stores. The Alpha-30R is stylish and comfortable in use and prints receipts or labels on-demand. Mobile printing operations can be carried out much faster and with more accuracy.

Model	Resolution	Max. Print Width	Max. Print Length	Max. Print Speed	Dimensions (W x H x D)	Weight	Tools	Key Features
<b>Alpha-30R Premium</b>	203 dpi	2.83"	110"	6 ips	118mm x 158mm x 68mm 4.64" x 6.22" x 2.68"	0.65kg	TSC Console SOTI Connect	<ul style="list-style-type: none"> <li>• IP54 rated and withstands 1.0m (3.3ft) tumble</li> <li>• Tested to be drop-proof/vibration-proof, with MIL-STD-810 certification</li> <li>• Withstand 2.1m (6.9ft) drop</li> <li>• Easy connectivity via MFi Bluetooth® 5.0 with NFC tap-to-pair</li> <li>• Reliable and secured dual-band 802.11ac Wi-Fi with fast roaming</li> </ul>



## Alpha-30L / Alpha-40L

The Alpha-30L and Alpha-40L mobile printers propel you into the next generation of smart, enhanced technology solutions for industrial-grade label printing applications. They also provide a full line of accessories to assist in performing diverse labeling tasks while on the go, especially in rigorous logistics applications.

Model	Resolution	Max. Print Width	Max. Print Length	Max. Print Speed	Dimensions (W x H x D)	Weight	Tools	Key Features
<b>Alpha-30L</b>	203 dpi	2.83"	110"	5 ips	117mm x 173mm x 79mm 4.61" x 6.81" x 3.11"	0.745kg	TSC Console SOTI Connect	<ul style="list-style-type: none"> <li>• IP54-rated and withstands 1.0m tumble</li> <li>• Withstands up to 6 ft. (1.8m) drop, 8.2 ft. (2.5m) with protective case</li> <li>• Built-in peeler or linerless kit option</li> <li>• TSC Sense Care to monitor smart battery and printhead status</li> </ul>
<b>Alpha-40L</b>	203 dpi	4.09"	110"	5 ips	160mm x 191mm x 79mm 6.30" x 7.52" x 3.11"	0.985kg		
<b>Alpha-30LHC*</b>	203 dpi	2.83"	110"	5 ips	117mm x 173mm x 79mm 4.61" x 6.81" x 3.11"	0.745kg		<ul style="list-style-type: none"> <li>• Clean white and grey color scheme</li> <li>• Antimicrobial and disinfectant-ready casing</li> <li>• IEC 60601-1 Medical-Grade standard power supply</li> </ul>

\*Not currently available in the US, Canada and Latin America.

## DA Series

The DA Series features a user-friendly design ideal for a wide variety of applications including product marking, point of sale, retail, small office, shipping labels, and many more at a very competitive price.



Model	Resolution	Max. Print Width	Max. Print Length	Max. Print Speed	Dimensions (W x H x D)	Weight	Tools	Key Features
<b>DA220</b>	203 dpi	4.25"	1,000"	6 ips	172mm x 165mm x 195mm 6.77" x 6.50" x 7.68"	1.5kg	TSC Console TSCPRGo	<ul style="list-style-type: none"> <li>• High quality double walled clamshell design</li> <li>• Up to 152.4mm (6") per second print speed</li> <li>• Spring loaded media holder</li> <li>• 5" OD media capacity</li> </ul>
<b>DA320</b>	300 dpi	4.16"	450"	4 ips				
<b>DA220HC*</b>	203 dpi	4.25"	1,000"	6 ips				
<b>DA320HC*</b>	300 dpi	4.16"	450"	4 ips				<ul style="list-style-type: none"> <li>• Crisp white and bright full-color scheme</li> <li>• Antimicrobial and disinfectant-ready casing</li> <li>• IEC 60601-1 Medical-Grade standard power supply</li> </ul>

\*Not currently available in the US, Canada and Latin America.



## DH Series

The DH series is highly comprehensive and adaptive to diverse printing requirements and designed to conquer various printing challenges. With future-proof addable upgrade modules, the DH series supports versatile labeling applications for medications, specimens, take-out food, weighing scales, entertainment tickets, shipping, linerless and so forth.

Model	Resolution	Max. Print Width	Max. Print Length	Max. Print Speed	Dimensions (W x H x D)	Weight	Tools	Key Features	
DH220/DH220T	203 dpi	2.13"	1,000"	8 ips	138mm x 172mm x 210mm 5.43" x 6.77" x 8.27"	1.6kg	TSC Console TSC Standalone Creator TSCPRTGo SOTI Connect	<ul style="list-style-type: none"> <li>• Auto switch print language emulation</li> <li>• Future-proof addable upgrade including connectivity, peeler, cutter (linerless) and narrow media adapter</li> <li>• Media damper mechanism for high-precision printing</li> <li>• Vertical DPI adjustment algorithm minimizes printing deviation</li> <li>• Internal Embedded Webpage and virtual control panel for real-time remote printer management</li> </ul>	
DH320/DH320T	300 dpi	2.24"	450"	6 ips					
DH240T	203 dpi	4.25"	1,000"	8 ips	208mm x 170mm x 235mm 8.19" x 6.69" x 9.25"	2.1kg			
DH340T	300 dpi	4.16"	450"	6 ips					
DH220THC	203 dpi	2.13"	1,000"	8 ips	138mm x 172mm x 210mm 5.43" x 6.77" x 8.27"	1.6kg			<ul style="list-style-type: none"> <li>• Crisp white and bright full-color scheme</li> <li>• Antimicrobial and disinfectant-ready casing</li> <li>• IEC 60601-1 Medical-Grade standard power supply</li> </ul>
DH320THC	300 dpi	2.24"	450"	6 ips					
DH240THC	203 dpi	4.25"	1,000"	8 ips	208mm x 170mm x 235mm 8.19" x 6.69" x 9.25"	2.1kg			
DH340THC	300 dpi	4.16"	450"	6 ips					



## MB Series

The MB Series industrial label printers deliver durable, high-quality thermal printing with an all-metal mechanism for versatile applications. The MB241 Series has a bifold media door that reduces space requirements by 24%, accommodates label rolls up to 8 inches in diameter, and handles special media types like thick hangtags. Optional accessories, including linerless kits, peel-off kits, and internal rewinders, enhance versatility.

Model	Resolution	Max. Print Width	Max. Print Length	Max. Print Speed	Dimensions (W x H x D)	Weight	Tools	Key Features
MB241*	203 dpi	4.21"	1,000"	12 ips	248mm x 274mm x 436mm 9.76" x 10.79" x 17.17"	9.1kg	TSC Console TSC Standalone Creator TSCPRTGo SOTI Connect	<ul style="list-style-type: none"> <li>• Bifold media door enhances space efficiency</li> <li>• All-metal print mechanism for durability and high-quality printing</li> <li>• Diverse accessories support versatile applications</li> </ul>
MB341*	300 dpi	4.16"	450"	9 ips				
MB241T	203 dpi	4.21"	1,000"	12 ips				
MB341T	300 dpi	4.16"	450"	9 ips				

\*Not currently available in the US, Canada and Latin America.



# RFID Printers



Our RFID printers offer solutions for a wide range of applications from enterprise-level desktop printers to high-volume industrial printers. We offer high-performance features, including 4-inch and 6-inch print widths, the ability to print on standard RFID labels and on-metal tags and up to 600 dpi for small labels. Our RFID printers are enhanced to include high-speed encoding, high-memory encoding, and RFID field upgrade kits. Our printers are easy to use, easy to calibrate and offer compatibility with PrintNet Enterprise remote printer management software.

In addition to stationary RFID printers, we offer a portable RFID model to print and encode labels hands-free and on the go. The Alpha-40L RFID is compatible with SOTI Connect and TSC Console remote printer management software.





## Alpha-40L RFID

The Alpha-40L RFID features a user-friendly, heavy-duty and drop-resistant design, enhancing workers' mobility in challenging environments. The rugged design is ideal for applications such as direct store delivery (DSD) and industrial field service.

Model	Resolution	Max. Print Width	Max. Print Length	Max. Print Speed	Dimensions (W x H x D)	Weight	Tools	Key Features
Alpha-40L RFID	203 dpi	4.09"	110"	5 ips	160mm x 191mm x 79mm 6.30" x 7.52" x 3.11"	1.025kg	TSC Console SOTI Connect	<ul style="list-style-type: none"> <li>High speed UHF RFID encoding</li> <li>IP54 rating for dust and water resistance</li> <li>Rugged design for drop from 6' (1.8m) and tumbles from 3.3' (1.0m)</li> <li>Optional IP-rated protective case with 8.2' (2.5m) drop</li> <li>MFi Bluetooth® 5.0 with NFC tap-to-pair, or dual band Wi-Fi connectivity</li> </ul>



## T800 Series

The T800 high-performance RFID printer offers industrial features in a desktop footprint. Applications include, tracking products throughout the supply chain, taking inventory in real-time, and quickly locating assets within the enterprise.

Model	Resolution	Max. Print Width	Max. Ribbon Length	Max. Print Speed	Dimensions (W x H x D)	Weight	Tools	Key Features
T820	203 dpi	4.1"	300m	8 ips	210mm x 190mm x 285mm 8.3" x 7.5" x 11.2"	2.9kg	PrintNet Enterprise SOTI Connect	<ul style="list-style-type: none"> <li>Rugged design in a small footprint</li> <li>High speed UHF RFID encoding</li> <li>Industry-leading performance</li> <li>Support for standard smart labels</li> </ul>
T830	300 dpi	4.1"	300m	6 ips				



## T4000 Series

The T4000 offers industrial printer features in a compact footprint and the ability to encode on both standard smart labels and on-metal tags.

Model	Resolution	Max. Print Width	Max. Ribbon Length	Max. Print Speed	Dimensions (W x H x D)	Weight	Tools	Key Features
T4204	203 dpi	4.1"	450m	12 ips	264mm x 276mm x 455mm 10.40" x 10.9" x 17.9"	10kg	PrintNet Enterprise SOTI Connect	<ul style="list-style-type: none"> <li>Industrial construction and performance in a compact design</li> <li>Support for both standard smart labels and on-metal tags</li> <li>Industry-leading encoding commands</li> </ul>
T4304	300 dpi	4.1"	450m	10 ips				



## T6000e Series

Featured in RFID Journal's Top 10 Products of 2020, the T6000e offers top of the line RFID encoding abilities including high-speed and high-memory encoding.

Model	Resolution	Max. Print Width	Max. Ribbon Length	Max. Print Speed	Dimensions (W x H x D)	Weight	Tools	Key Features
T6204e	203 dpi	4.1"	450m	14 ips	297.2mm x 330.2mm x 520.7mm 11.7" x 13" x 20.5"	16.7kg	PrintNet Enterprise SOTI Connect	<ul style="list-style-type: none"> <li>• Multiple options and configurations available</li> <li>• 4" and 6" print widths available</li> <li>• 600 dpi option for small labels and barcodes</li> <li>• Support for standard smart labels, on-metal tags and many other tag constructions</li> <li>• With optional ODV barcode verifier, inspect, grade and encode RFID labels with a single printer</li> </ul>
T6204e ODV-2D	203 dpi	4.1"	450m	8 ips	276.86mm x 312.42mm x 558.8mm 10.9" x 12.3" x 22"	16.3kg		
T6304e	300 dpi	4.1"	450m	12 ips	297.2mm x 330.2mm x 520.7mm 11.7" x 13" x 20.5"	16.7kg		
T6304e ODV-2D	300 dpi	4.1"	450m	8 ips	276.86mm x 312.42mm x 558.8mm 10.9" x 12.3" x 22"	16.3kg		
T6604e	600 dpi	4.1"	450m	6 ips	297.2mm x 330.2mm x 520.7mm 11.7" x 13" x 20.5"	16.7kg		
T6604e ODV-2D	600 dpi	4.1"	450m	6 ips	276.86mm x 312.42mm x 558.8mm 10.9" x 12.3" x 22"	16.3kg		
T6206e	203 dpi	6.5"	450m	12 ips	340.4mm x 330.2mm x 520.7mm 13.4" x 13" x 20.5"	18.1kg		
T6306e	300 dpi	6.5"	450m	10 ips	340.4mm x 330.2mm x 520.7mm 13.4" x 13" x 20.5"	18.1kg		



## PEX-2000 Series

The PEX-2000 Print Engine seamlessly combines high-performance RFID encoding with exceptional reliability in a compact design for automating item-level RFID tagging. With a rich legacy, it effortlessly incorporates into any print and apply system, providing a comprehensive solution.

Model	Resolution	Max. Print Width	Max. Print Length	Max. Print Speed	Dimensions (W x H x D)	Weight	Tools	Key Features
PEX-2240L PEX-2240R	203 dpi	4.09"	1,000"	18 ips				<ul style="list-style-type: none"> <li>• Up-to-date standards support</li> <li>• Support for various tag and label constructions</li> <li>• RFID auto calibration for effortless label switching</li> <li>• Streamlined validation with automatic overstrike</li> </ul>
PEX-2340L PEX-2340R	300 dpi	4.09"	450"	14 ips	245mm x 300mm x 390mm 9.65" x 11.81" x 15.35"	12.7kg	TSC Console SOTI Connect	
PEX-2640L PEX-2640R	600 dpi	4.09"	100"	6 ips				
PEX-2260L PEX-2260R	203 dpi	6.61"	580"	14 ips				
PEX-2360L PEX-2360R	300 dpi	6.61"	260"	12 ips	245mm x 300mm x 450mm 9.65" x 11.81" x 17.71"	14.35kg	TSC Console SOTI Connect	





# Genuine Supplies

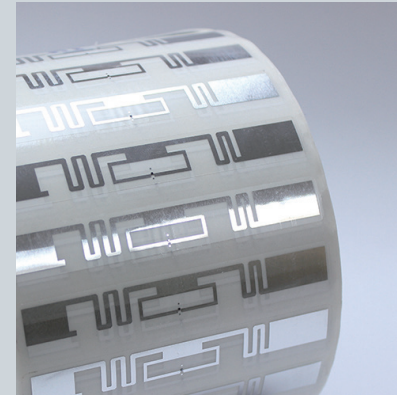
Our product expertise runs deep and our supplies knowledge base is comprehensive.

With product experts that can guide you through all stages of your consumables application, you can be assured that your supplies will be optimized in form, fit and function.\*

\*Supplies offer vary by region



Thermal Printing Solutions



UHF RFID Labels



Wristbands



Linerless Labels



Inkjet Labels and Tanks



Custom Labels



Cleaning Supplies

# Integrated Print Solutions

## Printer Management Made Easy



### TSC Console PC

TSC Console is a free software for quickly and remotely monitoring printers, configuring settings, deploying programs, and troubleshooting problems.



### TSC Console Web

TSC Console Web manages both TSC Auto ID and Printronix Auto ID printers in one platform, enabling remote monitoring, configuration, program deployment, and troubleshooting, with a dashboard for quick fleet overview.



### SOTI Connect

SOTI Connect is an Enterprise-Grade Printer Management software that provides complete lifecycle management of our printer models.



### PrintNet Enterprise

PrintNet Enterprise is a free software that allows you to easily organize your Enterprise thermal and RFID printers in a single dashboard from which you can remotely monitor and control them from any networked PC.

## Streamlined Printing Operation

### At The Workplace And On-The-Go



### TSC Standalone Creator

TSC Standalone Creator is an exclusive software that makes updating interactive touch panel menus and label designs easy by using an icon-based drag-and-drop interface for TSC printers. No programming experience is required.



### TSCPRTGo

TSCPRTGo is an exclusive software that works with TSC Standalone Creator to offer users seamless print operation on-the-go at anytime, anywhere at your workplace.



A photograph of four call center agents in a modern office setting. They are all wearing blue shirts and headsets, focused on their work. The lighting is bright and professional. The agents are arranged in a row, with the woman in the center smiling slightly.

# Global Service Program

## Flexible Options

Our Global Service Program provides a set of pre-determined, fixed cost services and support throughout the years to keep printers in proper working condition by planning and budgeting all the service needs. We offer a full line-up contract duration of up to five years to enhance the protection. We recommend to choose and purchase the right service at the time the printer is purchased. This way, you can enjoy the selected service at value price.





## On-Site Service

On-Site Service is a fast and convenient way to ensure operation is up and running at all times. Our technicians will travel to your location to get printer back to optimal performance. All labor and travel for the repair are included. Under this service agreement, all our printers receive the following at NO ADDITIONAL COST:

A service technician will arrive the next business day after a service call to most locations<sup>1</sup>

- On-site response with parts is readily available
- TSC Auto ID will cover ALL parts<sup>2</sup>
- All TSC Auto ID genuine parts and labor<sup>3</sup>
- All travel cost for the repair is included



## Return Printers to Depot

Reduce the hassle of hardware issues with the Return Printers Service. Ship or deliver the failed unit to our service center that is closest to you, and enjoy delivery of a fully operational unit to your location<sup>1</sup>. The Return Printers Service comes with:

- All parts and labor<sup>2</sup>
- Required repair of non-functioning equipment
- Cleaning and adjustment
- Complete preventative maintenance
- Return shipping at no cost
- Turnaround of 7~10 business days after date of receipt
- Engineering updates are automatically applied



## Return Parts to Depot

(Return Parts to Depot is for certified partners only)

Adding Return Parts service at the point of purchase is an effective way of protecting the printer. Return Parts to Depot contains two options—Extended Warranty and Comprehensive Warranty.

With different parts coverage, you can select the right option. The Return Parts to Depot service also guarantees that certified and trained technicians will only use genuine new TSC Auto ID's parts. The service also includes technical support and diagnosis by phone or email to determine if the issue can be resolved at the point of failure.

<sup>1</sup>Service availability & office hours depend on the region.

<sup>2</sup>For detailed terms and conditions, please refer to the "Warranty Coverage" table in the Global Service Program brochure.

<sup>3</sup>Does not apply to third-party service providers.

#### **CORPORATE HEADQUARTERS**

TSC Auto ID Technology Co., Ltd.  
Tel: +886 2 2218 6789  
E-mail: [apac\\_sales@tscprinters.com](mailto:apac_sales@tscprinters.com)

#### **LI ZE PLANT**

TSC Auto ID Technology Co., Ltd.  
Tel: +886 3 990 6677  
E-mail: [apac\\_sales@tscprinters.com](mailto:apac_sales@tscprinters.com)

#### **ASIA PACIFIC**

TSC Auto ID Technology Co., Ltd.  
Tel: +886 2 2218 6789  
E-mail: [apac\\_sales@tscprinters.com](mailto:apac_sales@tscprinters.com)

#### **AMERICAS**

TSC Auto ID Technology America Inc.  
Tel: +1 657 258 0808  
E-mail: [americas\\_sales@tscprinters.com](mailto:americas_sales@tscprinters.com)

#### **BRAZIL**

TSC Brazil Representative Office  
Tel: +55 (11) 3554 7225  
E-mail: [americas\\_sales@tscprinters.com](mailto:americas_sales@tscprinters.com)

#### **MEXICO**

TSC Mexico Representative Office  
Tel: +1 52 (33) 3673 1406  
E-mail: [americas\\_sales@tscprinters.com](mailto:americas_sales@tscprinters.com)

#### **EMEA**

TSC Auto ID Technology EMEA GmbH  
Tel: +49 (0) 8106 37979 000  
E-mail: [emea\\_sales@tscprinters.com](mailto:emea_sales@tscprinters.com)

#### **RUSSIA**

TSC Auto ID Technology EMEA GmbH  
Tel: +7 495 646 3538  
E-mail: [emea\\_sales@tscprinters.com](mailto:emea_sales@tscprinters.com)

#### **MIDDLE EAST**

TSC Auto ID Technology ME Ltd, FZE  
Tel: +971 4 2533 069  
E-mail: [emea\\_sales@tscprinters.com](mailto:emea_sales@tscprinters.com)

#### **CHINA**

Tianjin TSC Auto ID Technology Co., Ltd.  
Tel: +86 22 5981 6661  
E-mail: [apac\\_sales@tscprinters.com](mailto:apac_sales@tscprinters.com)

#### **KOREA**

TSC Korea Representative Office  
Tel: +82 2 852 3322  
E-mail: [apac\\_sales@tscprinters.com](mailto:apac_sales@tscprinters.com)

#### **INDIA**

TSC India Representative Office  
Tel: +91 2249 679 315  
E-mail: [apac\\_sales@tscprinters.com](mailto:apac_sales@tscprinters.com)