



TSCPRTGo



User Manual

Copyright Information

©2021 TSC Auto ID Technology Co., Ltd.

The copyright in this manual, the software and firmware in the printer described are owned by TSC Auto ID Technology Co., Ltd. All rights reserved.

CG Triumvirate is a trademark of Agfa Corporation. CG Triumvirate Bold Condensed font is under license from the Monotype Corporation. Windows is a registered trademark of Microsoft Corporation.

All other trademarks are the property of their respective owners. Information in this document is subject to change without notice and does not represent a commitment on the part of TSC Auto ID Technology Co. No part of this manual may be reproduced or transmitted in any form or by any means, for any purpose other than the purchaser's personal use, without the expressed written permission of TSC Auto ID Technology Co.



Table of Contents

1. Getting Started.....	1
1.1 Overview.....	2
1.2 Enter into TSCPRTGo Page	3
2. Funciton	4
2.1 Load File.....	4
2.2 Update Database	5
2.3 Label Preview	6
2.4 Synchronize Variables	7
2.5 Exit	8
Revise History	9

1. Getting Started

TSCPRTGo is an exclusive software working with **TSC Standalone Creator** to offer users seamless print operation on-the-go at anytime, anywhere at workplace.

Prerequisites:

- TSC Printers with WiFi or Bluetooth module
- Mobile device

1.1 Overview

TSCPRTGo:

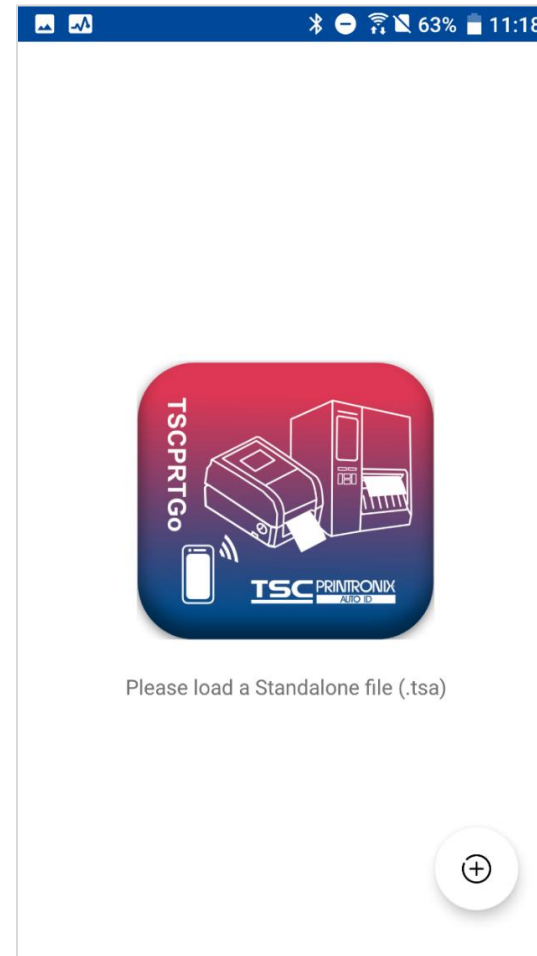
- Embedded in **TSC Mobile Utility**
- Support printer with/without LCD
- Display **Standalone Creator Template** on mobile device

Support Models: :

Type	Print Width	Series	TSC STANDALONE CREATOR	TSCPRTGo
Desktop	2-inch	TDP		V
		TTP		V
	4-inch	TX		V
		TTP		V
		TC		V
		TE		V
		TDP		V
		DA		V
Industrial	4-inch	ML240		V
		MB240	V (Touch panel only)	V
		MH241	V(Touch panel only)	V
		MX241P	V	V
	6-inch	MH261T	V	V
	8-inch	TTP-286MT	V	V
Print Engine & Modules	4-inch	PEX-1001		V
		MH241	V (Touch panel only)	V
		MB240	V (Touch panel only)	V
		TE210		V

1.2 Enter into TSCPRTGo Page

1. Download the **TSC Mobile Utility** from Google Play Store/ Apple App Store.
2. Connect to the printer by **WiFi** or **Bluetooth**.
3. Click **Print** section then select **TSCPRTGo**.



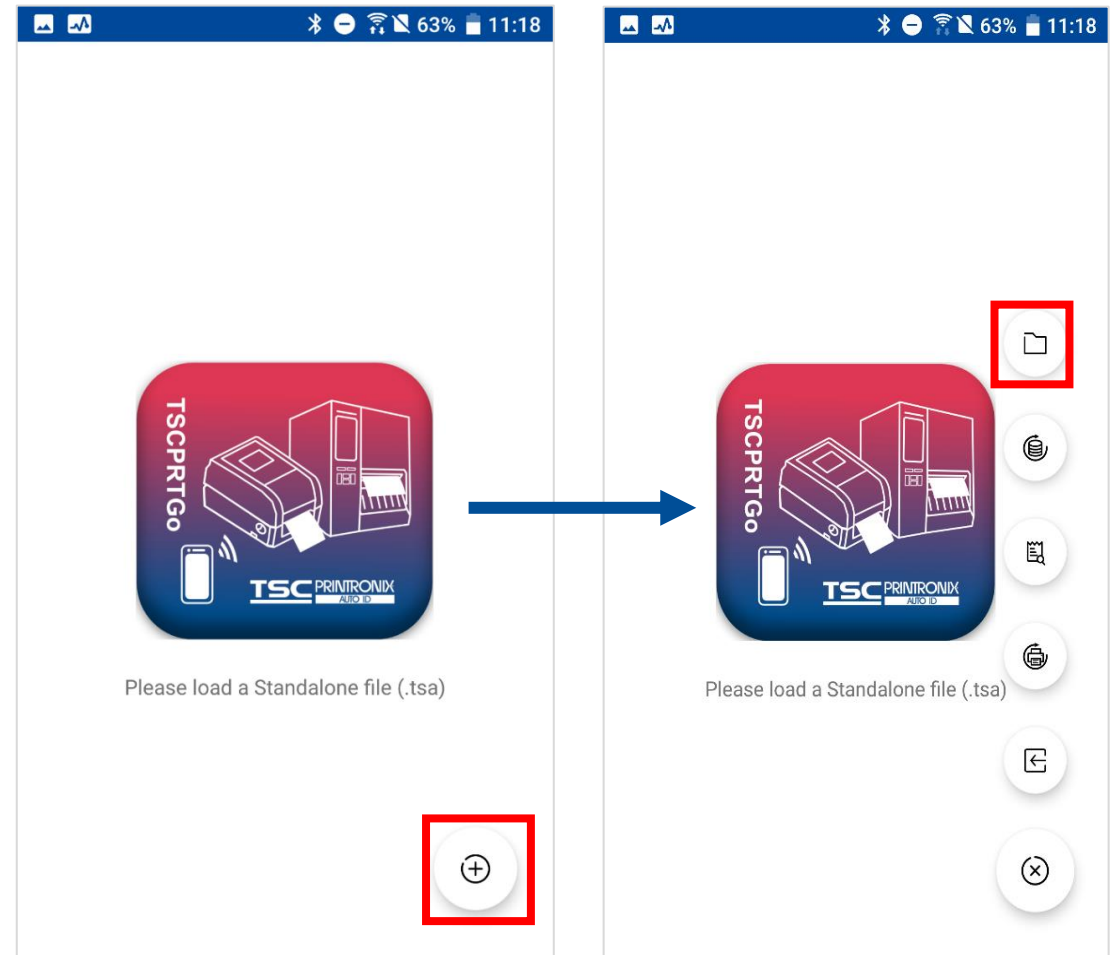
2. Function

In this section, the basic functions on the TSCPrnGo will be explained, please click the icon to expand the functions list.

2.1 Load File

Load File allows user to insert the buint-in template or load the .tsa file from **TSC Standalone Creator**.

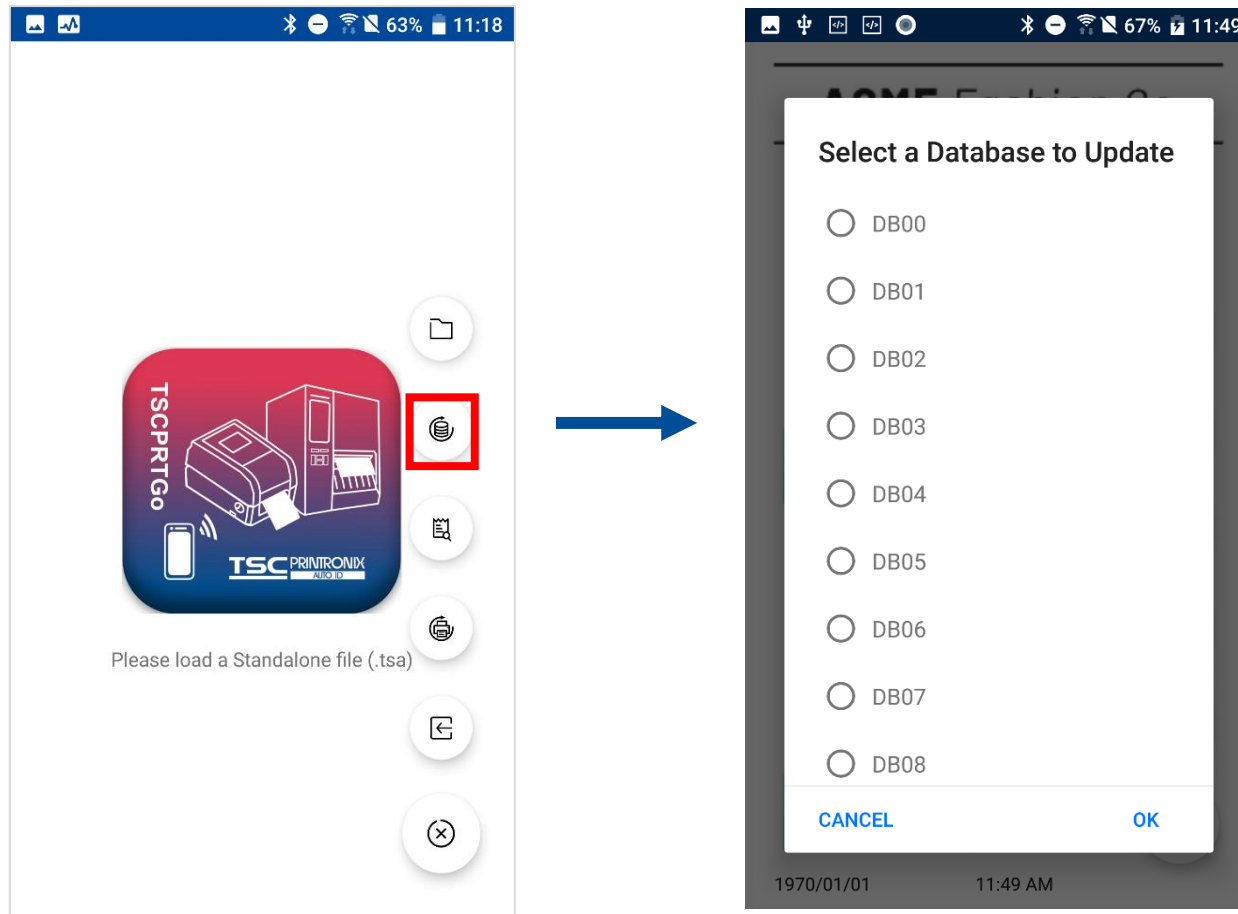
- **Template**
 - UPS Shipper International Template
- **From Storage File (.tsa)**
 - File from local device
 - File from cloud (Need Google Drive/Dropbox App)



2.2 Update Database

Update Database enable users to mount the selected CSV as a new database. 简体

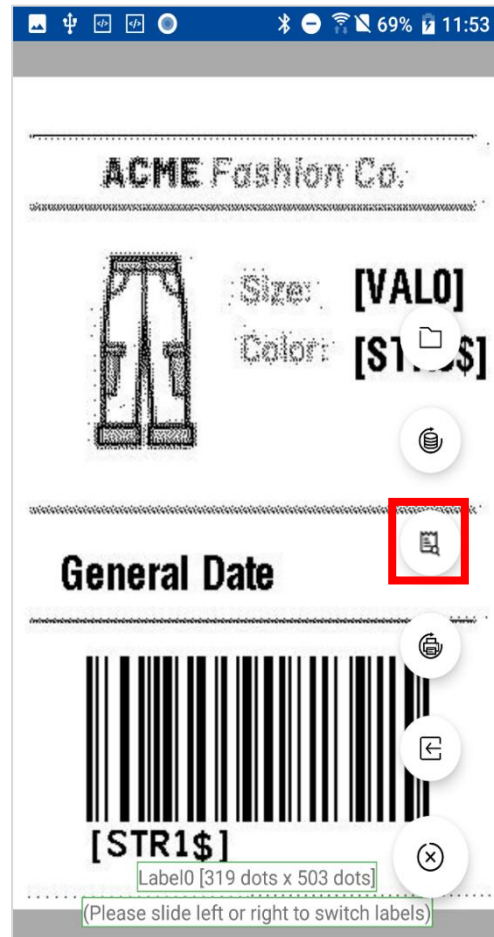
- When querying data, the mounted database has a higher priority than the original database in the .tsa file and will be used first.



2.3 Label Preview

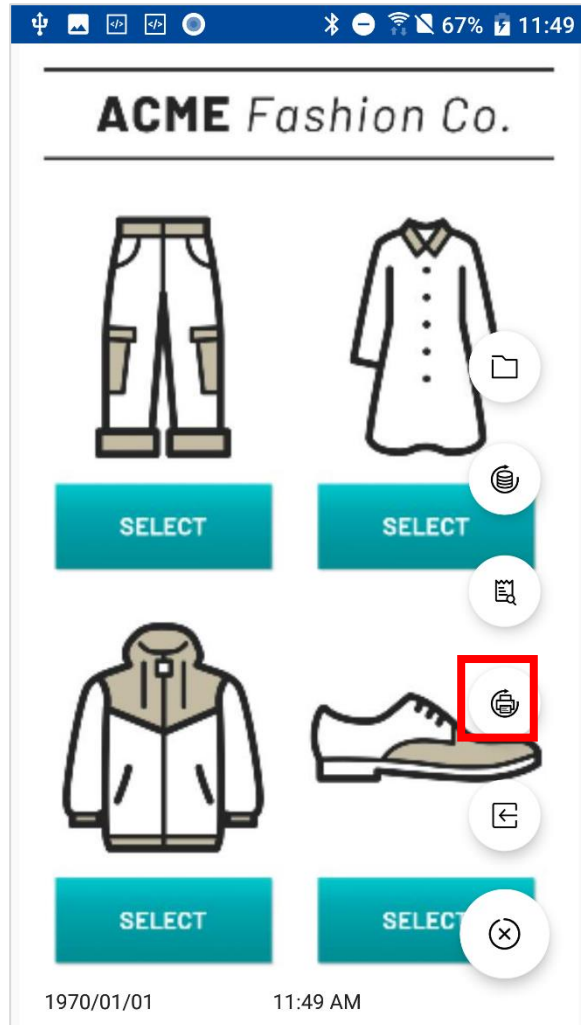
Label Preview enable users to preview the actual printed label.

- Display of label can be designed by **TSC Standalone Creator**.
- In **Demo Mode**, users can preview the label from **.tsa** file, but can not see the actual variable value.
- If the printer is connected and the firmware support the **Preview** command in **TSPL**, the actual variable value will be shown on your mobile display; If the printer is connect but its firmware does not support the **Preview** command in **TSPL**, then user can only see the primary variable form (STR0\$, VAL0, etc) which is as same as **Demo Mode**.



2.4 Synchronize Variables


Synchronize Variables enables users to synchronize the value of variables in the printer to **TSCPRTGo**.



Before:

Variable	TSCPRTGo	Printer
STR0\$	Text2	Text1
VAL0	10	1
FORMULA0\$	20	2
@0	0005	0004

After:

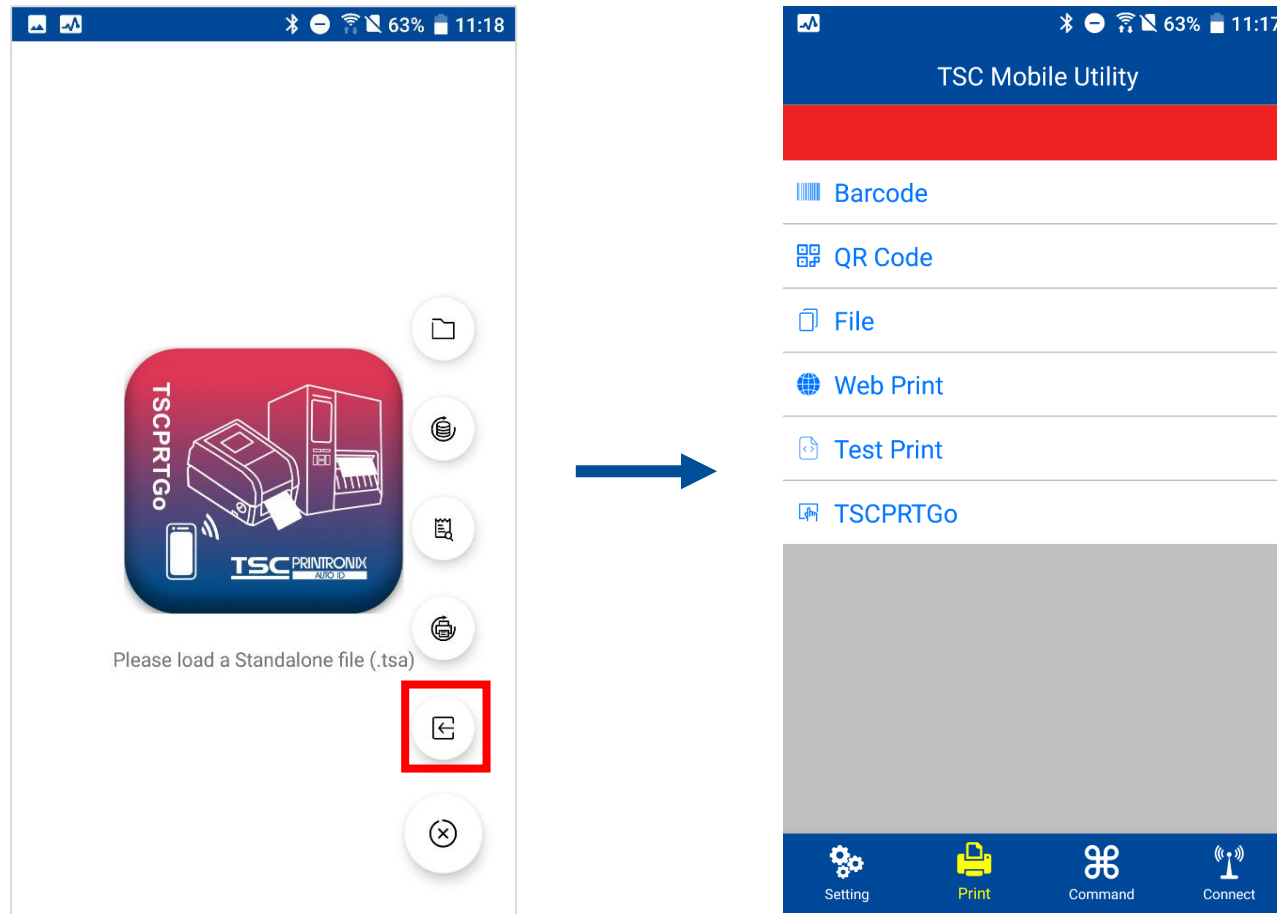


Variable	TSCPRTGo	Printer
STR0\$	Text1	Text1
VAL0	1	1
FORMULA0\$	2	2
@0	0004	0004

Value in TSCPRTGo will be sync with printer's value.

2.5 Exit

Exit enables users to quit from **TSCPRTGo** and return to **TSC Mobile Utility** main page.



Revise History

Date	Content	Editor
------	---------	--------

TSC **PRINTRONIX**[®]
AUTO ID