

RFID Printers

Fulfill UHF RFID Label Printing and Encoding in Demanding Environments

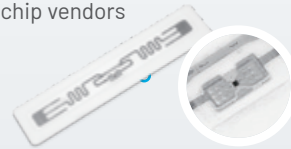
Unique Features

- Encoding: RAIN/UHF
- Standard: GS1 EPC Gen2, ISO 18000-63
- Chips: Support for all mainstream chips and many new advanced chips. Alien, Asygn, Axzon, EM Micro, Fudan, Impinj, Kiloway, NXP, Tego and others

- RAIN RFID Compliant



- Support all mainstream chip vendors

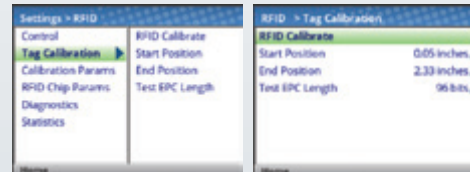


- High speed encoding: Proprietary "Encode During Print" delivers high-speed encoding and reduced inlay placement issues

- Validate RFID label and overstrike and reprint when encoding fails



- Auto calibration



- Support label pitch down to 0.625" (16 mm)



- Support for standard smart labels, on-metals and many other tag constructions

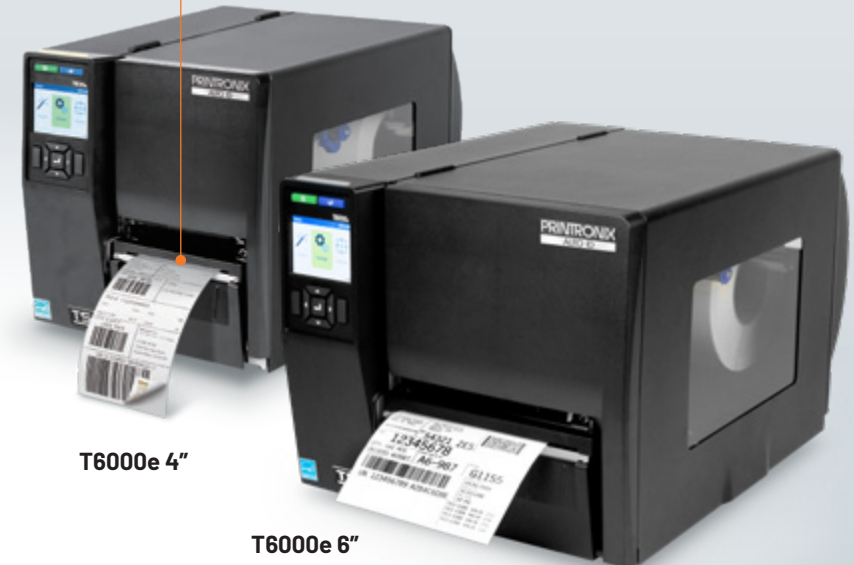


- Fixed external RFID antenna; encoding during print
- Supports on-metal label, thickness up to 0.05" (1.2mm)



T4000 4"

- Adjustable internal & fixed external RFID antenna to encode RFID labels
- Supports on-metal label, thickness up to 0.088" (2.2mm)
- 600 dpi for small labels
- Optional ODV2D barcode verifier to inspect and grade labels



T6000e 4"

T6000e 6"

- Adjustable internal RFID antenna



T800 4"

RFID Profiler

- Captures RFID inlay response as it passed over the printer antenna
- Distinguish the quality of the RFID label



RFID Printers | Datasheet



Model	T6000e 4"	T6000e 6"	T4000	T800
RFID System	Encoding: RAIN / UHF Standard: GS1 EPC Gen2 / ISO 18000-63 Antenna: Internal adjustable & external fixed Printer Languages: PGL, ZGL, STGL, MGL		Encoding: RAIN / UHF Standard: GS1 EPC Gen2 / ISO 18000-63 Antenna: External fixed Printer Languages: PGL, ZGL, STGL, MGL	Encoding: RAIN / UHF Standard: GS1 EPC Gen2 / ISO 18000-63 Antenna: Internal adjustable Printer Languages: PGL, ZGL, STGL, MGL
RFID Labels	Types: Standard / On-metal / Other On-metal Tags: Thickness up to 0.088" (2.2mm) Label Pitch: Down to 0.625" (16mm) RFID Label Calibration: Automatic		Types: Standard / On-metal / Other On-metal Tags: Thickness up to 0.05" (1.2mm) Label Pitch: Down to 0.625" (16mm) RFID Label Calibration: Automatic	Label / Tags: Standard Label Pitch: Down to 0.625" (16mm) RFID Label Calibration: Automatic
Chip (IC) / Inlays	Chips: Includes Alien, Asygn, Axzon, EM Micro, Fudan, Impinj, Kiloway, NXP, Tego Inlays: Check our RFID Solution webpage for the latest list of supported chips and inlays			
RFID Data Validation	Encoding Failures: Full / Partial Label Overstrike (Depends on label length) RFID Label Counter: Tracks good/bad labels			
Print Resolution	203dpi, 300dpi, 600dpi		203dpi, 300dpi	203dpi, 300dpi
Max Print Speed	14ips@203dpi, 12ips@300dpi, 6ips@600dpi	12ips@203dpi, 10ips@300dpi	12ips@203dpi / 10ips@300dpi	8ips@203dpi / 6ips@300dpi
Max Print Width	4.1", 6.55"		4.1"	4.1"
Media Handling	Tear, Cutter, Peel / Rewind*, Batch /Rewind*		Tear, Cutter	Tear, Peel**, Cutter**
Interfaces	Standard: Ethernet, USB Host/Device, Serial Optional: 802.11 a/b/g/n/ac, Parallel, GPIO		Standard: Ethernet, USB Host/Device, Serial Optional: 802.11 a/b/g/n/ac, MFI Bluetooth 5.0	Standard: Ethernet, USB Host/Device, Serial Optional: 802.11 a/b/g/n/ac, MFI Bluetooth 5.0

*Four-inch, internal antenna only

** Performance may be limited depending on label construction



Global Headquarters

9F, No. 95, Minquan Road, Xindian District
New Taipei City, Taiwan 231
Office: +886 2 2218 6789

EMEA

Georg-Wimmer-Ring 8b
85604 Zorneding, Germany
Office: +49 8106 37979 000

Americas

3040 Saturn Street, Suite 200
Brea, CA 92821 U.S.A.
Office: +1 657 258 0808

©2024 TSC Auto ID Technology Co., Ltd. All Rights Reserved.

TSC Auto ID [tscprinters.com](https://www.tscprinters.com)